



БЪЛГАРСКА
ФЕДЕРАЦИЯ
ОРИЕНТИРАНЕ



BULLETIN 1

4th South East European Masters Orienteering Championships

<http://seeoc2015.orienteeing.bg/>

Bansko-Bulgaria

26-30 August 2015



ORGANIZING COMMITTEE:

Event Director: Todor Pedev

Secretary: Konstantin Koinov

Technical Director: Valentin Garkov

Accommodation and Logistics: Petya Koseva

National Controller: Georgi Hadjimitiev

IOF Event adviser: Dragan Nikolic

PRELIMINARY EVENT PROGRAMME:

26th August, Wednesday

UNTIL 21:00 – Arrival, registration

14:00 – 19:00 – Model event

27th August, Thursday

UNTIL 12:00 – Arrival, registration

16:00 – Sprint

19:00 – SEEMOC Official Opening and Prize giving ceremony Sprint

28th August, Friday

10:00 – Long Distance

18:00 – Prize-giving ceremony Long Distance, Event Center

29th August, Saturday

10:00 – Middle Distance

18:00 – Prize-giving ceremony Middle Distance, Event Center

30th September, Sunday

09:30 – Mixed Relays

14:30 – Prize giving and Closing ceremony

CLASSES

According to SEEMOC Rules edition 1st April 2014!

Individual events: M/W35, 40, 45, 50, 55, 60, 65, 70, 75+

Mixed relays: MW 35, MW45, MW55+

ENTRY FEE

According to SEEMOC Rules – 40 EUR per competitor for all races.

PUNCHING SYSTEM

SPORT Ident electronic punching system will be used in all races. You can rent SI card from the organizers 3 EUR per start. 40 EUR if lost rented SI card. Please, appoint your SI Card number in the Event Entry Form.

MAPS AND TERRAINS

Maps	Terrains
Sprint: Scale 1:4000, Contour: 2,5m According to ISSOM 2007 Map Maker: Todor Pedev	City and park zone.
Long distance: Scale 1:15000, Contour: 5m According to ISOM 2000 Map Maker: Valentin Garkov	Terrain at 950 m above sea level. Moderately steep to steep hills. Vegetation mainly beech spruce forest, but there are forests and open vegetation. Runnability mostly very good, but reduced in some places due to denser vegetation. Visibility very good, but limited in denser areas.
Middle distance: Scale 1:10000, Contour: 5m According to ISOM 2000 Map Maker: Georgi Hadjimitiev	Terrain at 980 m above sea level. Terrain with a lot of micro contours and stones. Vegetation mainly beech spruce forest, but there are forests and open vegetation. Some undergrowth and small marshes. Runnability mostly very good, but reduced in some places due to denser vegetation. Visibility very good, but limited in denser areas. Good road network.
Relay: Scale 1:10000, Contour: 5m According to ISOM 2000 Map Makers: Georgi Hadjimitiev	Terrain at 980 m above sea level. Terrain with a lot of micro contours and stones. Vegetation mainly beech spruce forest, but there are forests and open vegetation. Some undergrowth and small marshes. Runnability mostly very good, but reduced in some places due to denser vegetation. Visibility very good, but limited in denser areas. Good road network.

ACCOMMODATION

There are various hotels in Bansko, from 2 to 5 stars, with good capacities. More information about accommodation and prices you can find in Bulletin 2.

TRANSPORTATION

Road distances to Bansko:

Sofia BUL: 150 km

Istanbul TUR: 600km

Thessaloniki 220km

Sarajevo BIH: 745km

Chisinau MD: 955km

Belgrade SRB: 530km

Zagreb CRO: 925km

Skopje MKD: 200km

Athens GRE: 715km,

Trieste ITA: 1160km

Bucharest ROU: 600km

Podgorica MNE: 680km



You can contact us for the special team transfer from Sofia international airport:

Bus:

The transfer from the airport to Bansko could be arranged also by the organizers upon request.

Also cars can be rented from the airport.

Other possibilities:

There are a lot of bus companies operating from Sofia to Bansko. It takes 2.5 hours to Bansko. The ticket price in 2014 is around 9 € one way.

Local transport to Events

If necessary, organizers can provide transport to the competition, with transportation fee.

Teams can use their own transport from accommodation to the events, but at their own responsibility.

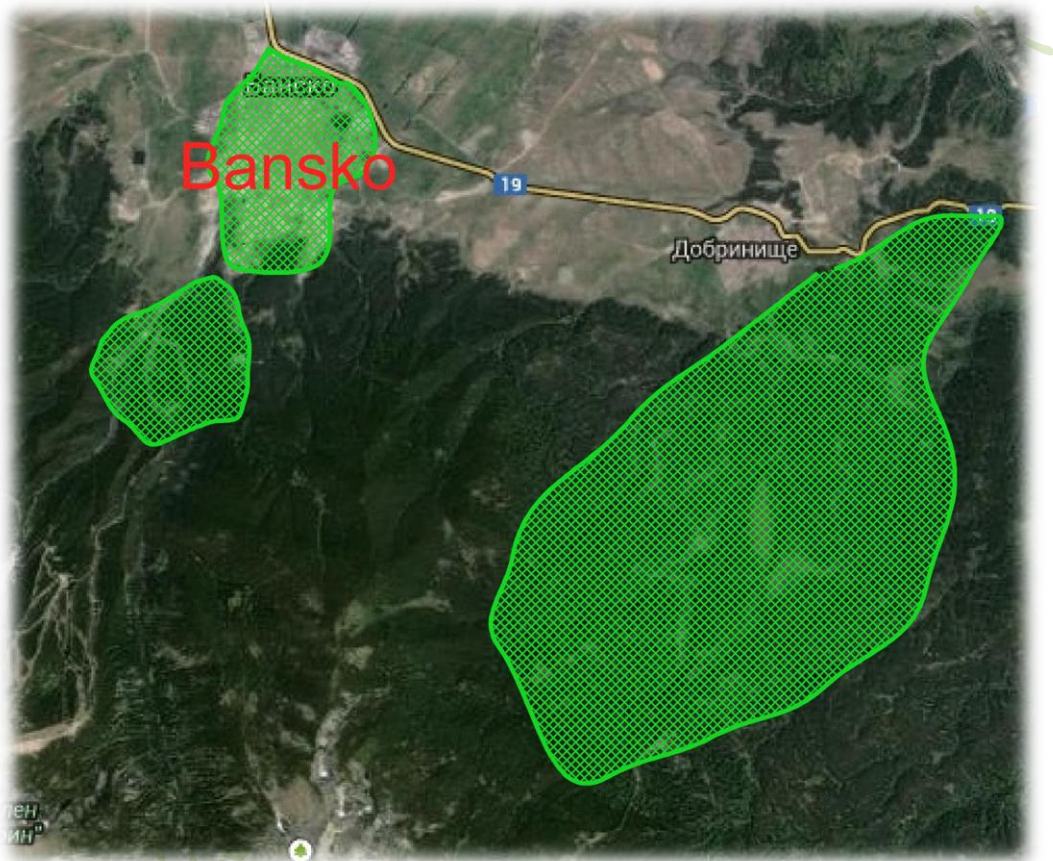
📌 TRAINING POSSIBILITIES

You can find more information at our website: <http://seeoc2015.orienteering.bg/>

EVENT CENTRE

Bansko – culture centre

📌 EMBARGOED AREAS



You can see the embargoed areas at this link: www.seeoc2015.orienteering.bg

The city center of Bansko is not restricted by embargo, but it is prohibited to have trainings or using of maps in the city centre.

Any violation of entering embargo area for visiting or training shall be notified at once to the organizer: bgof@abv.bg

📌 INFORMATION, ENTRIES, ORGANIZER CONTACTS

Contact person: Todor Pedev - Event Director

Email: todor_pedev@abv.bg , <http://seeoc2015.orienteering.bg/>

Mobile: +359 893 396 395

OTHER USEFUL INFORMATION

Bulletin 2 will be issued till the end of August 2014.

- **Visa information**

**Holders of valid ordinary passports from the following countries do not need a visa to visit Bulgaria for up to 90 days within each period of six months:*

Andorra,
Australia,
Austria,
Belgium,
Brazil,
Brunei
Canada,
Chile,
Costa Rica,
Croatia,
Cyprus,
Czech Republic,
Denmark,
El Salvador,
Estonia,
Finland,
France,
Germany,
Greece,
Guatemala,
Honduras,
Hungary,
Iceland,
Ireland,
Israel,
Italy,
Japan,
Latvia,
Liechtenstein,
Malta,
Serbia

Lithuania,
Luxembourg,
Malaysia,
Mexico,
Monaco,
Netherlands,
New Zealand,
Nicaragua,
Norway,
Panama,
Paraguay,
Poland,
Portugal,
Republic of Korea,
Romania,
San Marino,
Singapore,
Slovak Republic,
Slovenia,
Spain,
Sweden,
Switzerland,
UK (British Citizen Passport Holders and British Nationals /Overseas/ only),
USA,
Uruguay,
the Vatican,
Venezuela.
SAR – China (Hong Kong, Makao)

WELCOME TO THE 4th SOUTH EAST EUROPEAN MASTERS ORIENTEERING CHAMPIONSHIPS IN BULGARIA

